

**APTB 02/06**

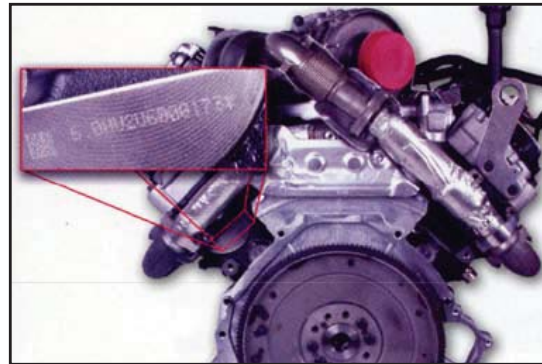
**SUBJECT: Engine Serial Number Locations**

**February 11, 2006**

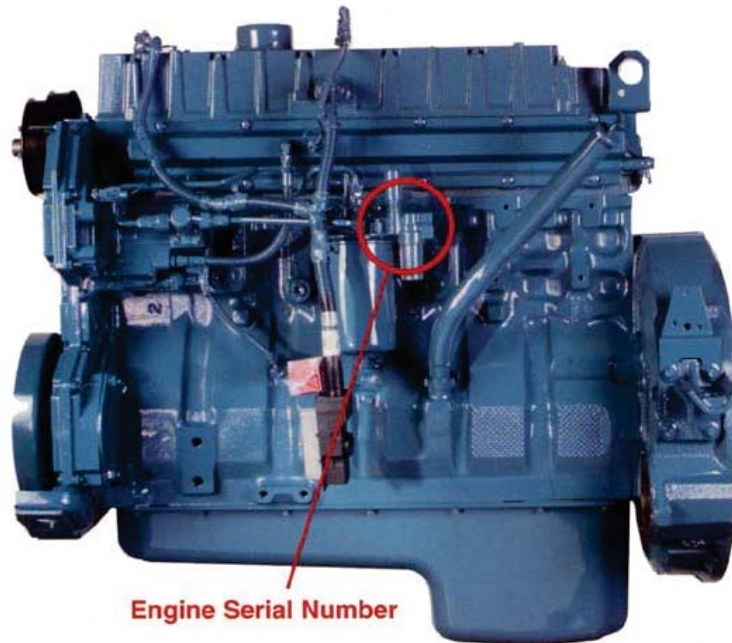
Many applications in the Alliant Power Application Guide list engine serial numbers. The photos below show engine serial number locations for 7.3 L Power Stroke, 6.0 L Power Stroke and I-6 engines.



**7.3 L DIT – LEFT REAR OIL COOLER BASE**



**6.0 L DIT – LEFT REAR CORNER CRANKCASE**



**Engine Serial Number**

**DT466E & I530E**

Stamped into machined area on left side of fuel filter mount and on the valve cover emissions label.

**Note:** Engines from 2004 and beyond have the serial number stamped on the crankcase pad on the right side.